

**Passenger Railroad (Amtrak) Station Survey**

This is a survey/questionnaire which was adapted from Department of Justice Polling Place Survey and can be used in assessing accessibility at (Amtrak) railroad stations in your state. (Because this survey is adapted from the DOJ Polling Place Survey the illustrations are illustrations of typical scenes at polling places). Amtrak has advised NDRN that they have a policy restricting photography and video on their property. <http://www.amtrak.com/photography-video-recording-policy>

Comments

**Railroad Station location:** \_\_\_\_\_, \_\_\_\_\_ County

**Reviewed by:** \_\_\_\_\_ **Date:** \_\_\_\_\_

**SECTION A: GENERAL RAILROAD PASSENGER STATION INFORMATION**

**A1.** What type of building is the railroad station?

\_\_\_ Stand alone

\_\_\_ Part of a large complex of building

\_\_\_ Other (describe) \_\_\_\_\_  
(Focus on access to train)

**A2.** What type of parking is used (check all that apply)?

\_\_\_ Parking lot \_\_\_ Parallel parking on street \_\_\_ Angled parking on street

- Note: Parallel parking spots on a street are not required to meet any accessibility guidelines.

**A3.** What type of parking lot is used?

\_\_\_ Paved and clearly marked \_\_\_ Paved \_\_\_ Gravel \_\_\_ Other (specify) \_\_\_\_\_

**A4.** Is the parking lot stable and firm?

Yes \_\_\_ No \_\_\_

**A5.** Is the parking lot well maintained?

Yes \_\_\_ No \_\_\_

## SECTION B: PARKING SPACES

**Comments**

**B1.** If parking is available, count the total number of parking spaces provided for the railroad station. (Do not count parallel parking spaces on the street; accessibility rules do not apply to such spaces.) Are the minimum number of accessible parking spaces provided, based on the total number of available parking spaces (see table below)? Yes \_\_\_ No \_\_\_

Total Spaces for Location	Required Minimum Number of Accessible Spaces
1-25 .....	1 van-accessible space (96 in.) w/ min. 96 in. wide access aisle
26-50 .....	1 car-accessible space (96 in.) w/ min. 60 in. wide access aisle + 1 van-accessible space
51-75 .....	2 car-accessible spaces (96 in.) w/ min. 60 in. wide access aisle + 1 van-accessible space
75-100 .....	3 car-accessible spaces (96 in.) w/ min. 60 in. wide access aisle + 1 van-accessible space

- Note: A universal space may be used in place of a van-accessible space. See picture below.

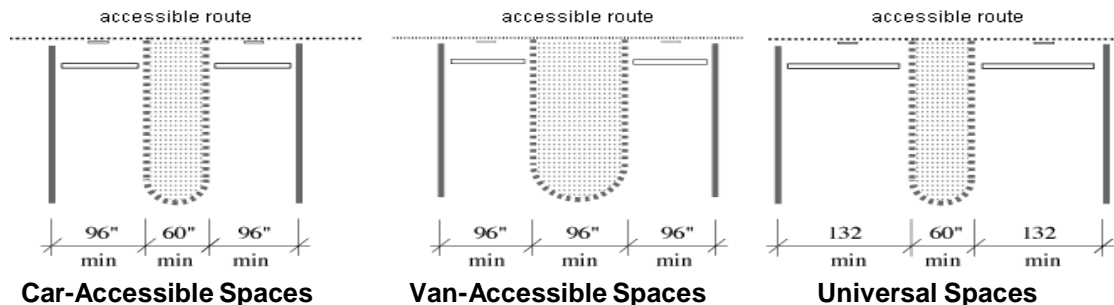
**B2.** Is there are least one van-accessible parking space provided with an access aisle that is at least 96 in. (8 ft.) wide; or, are universal parking spaces provided with a 132 in. (11 ft.) wide vehicle space and a 60 in. (5 ft.) wide access aisle? [ADA Stds. 4.1.2(5), A4.6] Yes \_\_\_ No \_\_\_

- Note: If there is a ramp, slope, or other item in the access aisle, please note this in the comment box. [ADA Stds. A4.6.3]

**B3.** For every car-accessible parking space, does it have its own, or share an adjacent, access aisle that is at least 60 in. (5 ft.) wide? [ADA Stds. 4.6.3] Yes \_\_\_ No \_\_\_



- Note: If there is a ramp, slope, or other item in the access aisle, please note this in the comment box. [ADA Stds. A4.6.3]



**Views of Accessible Parking Spaces Which Share an Access Aisle**



**B10.** If there is a curb between the access aisle and the accessible route to the building, is there a curb cut or ramp that meets the following requirements?

**Curb cut**

**B10-1.** Is the ramp surface at least 36 inches wide, excluding flared sides? [ADA Stds. 4.7.3] Yes \_\_\_ No \_\_\_

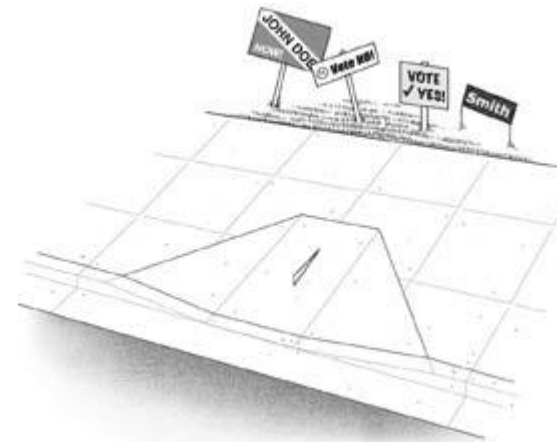
**B10-2.** Is the slope (up or down the ramp) less than 1:12 or 5 degrees? [ADA Stds. 4.7.2] Yes \_\_\_ No \_\_\_

**Built-up curb ramp**

**B10-3.** Is the ramp surface at least 36 inches wide, excluding flared sides? Yes \_\_\_ No \_\_\_

**B10-4.** If the ramp is a built-up curb ramp (not a curb cut), does it have flared sides or edge protection? Yes \_\_\_ No \_\_\_

**B10-5.** If the ramp is a built-up curb ramp, is the slope less than 1:12 or 5 degrees? [ADA Stds. 4.8.2] Yes \_\_\_ No \_\_\_



Curb ramp showing minimum 36 inch width for ramp section and 1:12 or 5 degrees slope on ramp section

**B11.** Is the van-accessible parking space the closest space to the accessible route that is the shortest route to the accessible entrance? [ADA Stds. 4.6.2] Yes \_\_\_ No \_\_\_

**B12.** Does each access aisle connect to an accessible route from the parking area to the accessible building entrance? [ADA Stds. 4.6.2] Yes \_\_\_ No \_\_\_

**B13.** Does the accessible route cross traffic (a street or driving lane of a parking lot)?

- Note: An accessible route is not considered to cross traffic if the route requires an individual to cross behind parked cars, but does not take the individual across the driving lane of the parking lot. Yes \_\_\_ No \_\_\_

**B13-1.** If yes, is the route clearly designated by a marked crossing? Yes \_\_\_ No \_\_\_

Comments

## SECTION C: PASSENGER DROP-OFF AREAS

Answer the following questions if a passenger loading area is provided. Otherwise, proceed to section D.

**C1.** Is a relatively level (1:50 or 1 degree max.) access area provided adjacent and parallel to the side of the vehicle pull-up area? [ADA Stds. 4.6.6] Yes \_\_\_ No \_\_\_

**C1-1.** If no, look for another relatively level location that is on an accessible route. Please indicate the location of the alternate area: \_\_\_\_\_



**C2.** Is the vehicle space relatively level (1 degree max.) in all directions? Yes \_\_\_ No \_\_\_

**C3.** Is the area for the access aisle at least 5 feet wide and 20 feet long? [ADA Stds. 4.6.6] Yes \_\_\_ No \_\_\_

- Note: Unlike an accessible parking space, the surface for the access aisle does not have to be marked or striped.

**C4.** Is the vertical height (clear space above the area) for the drop-off area and the exit at least 114 inches (9 feet 6 inches)? [ADA Stds. 4.6.5] Yes \_\_\_ No \_\_\_

**C5.** Is there a curb ramp between the vehicle pull-up area and the accessible route to the accessible entrance? [ADA Stds. 4.6.6] Yes \_\_\_ No \_\_\_

**C5-1.** If no, is there another area with a curb ramp connected to an accessible route that could serve as the drop-off area? Please indicate the location of the alternate area:




---



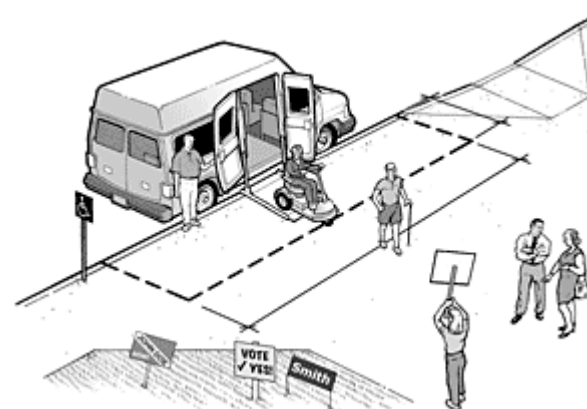
---



---



---



Comments

**C6.** If there is a curb ramp, is the slope of the ramp surface (excluding flared sides) less than 1:12 or 5 degrees? [ADA Stds. 4.7.2] Yes \_\_\_ No \_\_\_

**C7.** Is the width of the curb ramp surface (excluding flared sides) at least 36 inches? [ADA Stds. 4.7.3] Yes \_\_\_ No \_\_\_

**C8.** Does an accessible route connect the curb ramp to the accessible entrance? [ADA Stds. 4.1.2(1)] Yes \_\_\_ No \_\_\_

Comments

## SECTION E: SIDEWALKS AND WALKWAYS

**E1.** Is there an accessible route from the level area, curb cut, or curb ramp that serves the van-accessible parking space to the accessible entrance of the building? [ADA Stds. 4.1.2(1), 4.3] Yes \_\_\_ No \_\_\_

- Note: If the accessible route crosses a vehicular route, a marked crosswalk should be used.

**E2.** If there are public sidewalks or public transportation stops, is there an accessible route from those locations to the accessible entrance of the building? [ADA Stds. 4.1.2(1)] Yes \_\_\_ No \_\_\_



Comments

**E3.** Is the accessible route at least 36 inches wide? Yes \_\_\_ No \_\_\_

**E3-1.** If no, does the route narrow to no less than 32 inches wide for less than 2 feet in length (e.g. a doorway)? Yes \_\_\_ No \_\_\_

**E4.** Is the accessible route free of steps and abrupt level changes over 1/2 inch? Yes \_\_\_ No \_\_\_

- Note: Level changes ranging from 1/4 inch to 1/2 inch should be angled.

**E5.** Where an accessible route crosses a curb, is there a curb ramp or curb cut? Yes \_\_\_ No \_\_\_

**E5-1.** If yes, is the ramp surface at least 36 inches wide, excluding flared sides? [ADA Stds. 4.7.3] Yes \_\_\_ No \_\_\_

**E5-2.** Is the slope (up or down the ramp) less than 1:12 or 5 degrees? [ADA Stds. 4.7.2] Yes \_\_\_ No \_\_\_

**E6.** Are all parts of the accessible route sloped less than 1:20 or 3 degrees? Yes \_\_\_ No \_\_\_

**E6-1.** If yes, please skip question E7 below and proceed to question E8. Otherwise, answer question E7.

**E7.** Check the ramp for the following accessibility features.

**E7-1.** Is the ramp slope less than 1:12 or 5 degrees? [ADA Stds. 4.8.2]

Yes \_\_\_ No \_\_\_

**E7-2.** Is the ramp at least 36 inches wide between the handrails? Yes \_\_\_ No \_\_\_

**E7-3.** Are handrails mounted on between 34 and 38 inches above the ramp surface (measure from the top of the handrail)? [ADA Stds. 4.8.5] Yes \_\_\_ No \_\_\_

**E7-3a.** Is there a handrail on both sides of the ramp? (Including along a wall if the ramp abuts a wall) Yes \_\_\_ No \_\_\_

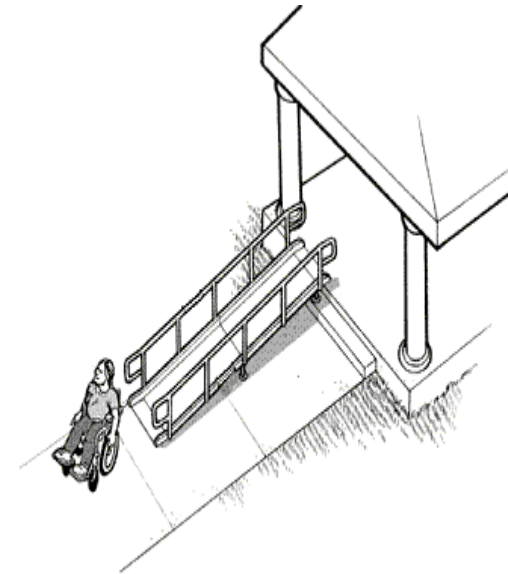
**E7-4.** Does the ramp have a level landing at the top and bottom of each ramp section that is at least 60 inches long and the width of the ramp (min. 36 inches)? [ADA Stds. 4.8.4] Yes \_\_\_ No \_\_\_

**E7-5.** If the ramp is more than 30 feet long, is a level landing at least 60 inches long provided between every 30 feet of ramp? [ADA Stds. 4.8.4] Yes \_\_\_ No \_\_\_

- Note: The level landing may be part of the sidewalk or walking surface.

**E7-6.** Is a level landing, 60 inches by 60 inches min., provided where a ramp changes directions? [ADA Stds. 4.8.4] Yes \_\_\_ No \_\_\_

- Note: Where the ramp leads to a door, this is often a change of direction and a level landing is required.



**Accessible Ramp Features**

Comments



**E7-7.** If the ramp or landing has a vertical drop-off on either side of the ramp of at least 6 inches, is edge protection provided on both sides (at least 2 inches high, or, if edge protection is not attached to the surface of the ramp, with less than 4 inches between the edge protection and the ramp surface)? [ADA Stds. 4.8.7] Yes \_\_\_ No \_\_\_

- Note: Where the ramp leads to a door, this is often a change of direction and a level landing is required.

**E8.** Is the sidewalk and/or walkway free of objects (e.g. wall-mounted boxes, signs, handrail extensions, trees)? Yes \_\_\_ No \_\_\_

**E8-1.** If no, are the bottom edges of the object 27 inches or less above the walkway? Yes \_\_\_ No \_\_\_

- Note: If the bottom edges of the object are 27 inches or less above the walkway, the object may extend any length into the walkway or sidewalk.

**E8-2.** If no, are the bottom edges of the object more than 27 inches, but less than 80 inches, above the walkway? [ADA Stds. 4.4, 4.3.1(3), 4.1.3(2)] Yes \_\_\_ No \_\_\_

**E8-2a.** If yes, does the object extend less than 4 inches into the sidewalk or walkway? Yes \_\_\_ No \_\_\_

**E8-3.** If the answer to E8-2 is yes, and the answer to E8-2a is no, can the object be lowered, removed, or modified, or can the route be changed to avoid the object? Yes \_\_\_ No \_\_\_

Explain: \_\_\_\_\_



Comments

**E9.** If exterior stairs are located in the accessible pathway, are the undersides of the stairs enclosed or protected with a cane-detectable barrier so that people who are blind or have low vision will not hit their heads on the underside? [ADA Stds. 4.4.2]

Yes \_\_\_ No \_\_\_

**E9-1.** If no, can a barrier or enclosure be added below the stair, or can the route be relocated away from the stair?

Yes \_\_\_ No \_\_\_



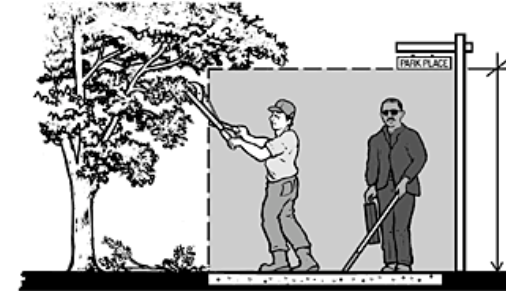
**When the underside of a stair is open, it is a hazard to people who are blind or have low vision. Enclosing the area below the stair or installing a cane-detectable barrier helps the person to stop before hitting her head.**

**E10.** Are all objects that hang over the pedestrian routes 80 inches (6 feet 8 inches) or more above the route?

Yes \_\_\_ No \_\_\_

**E10-1.** If no, can the objects be removed or relocated, or can a detectable object (e.g. cone, box) be added below?

Yes \_\_\_ No \_\_\_



**At least 80 inches above walkway**

Comments

## SECTION F: RAILROAD STATION ENTRANCE

Amtrak has advised NDRN that they have a policy restricting photography and taking video.

<http://www.amtrak.com/photography-video-recording-policy>

**F1.** Is there are least one entrance connected to an accessible route? Yes \_\_\_ No \_\_\_

**F1-1.** If the accessible entrance is not the main entrance, is the accessible entrance unlocked? Yes \_\_\_ No \_\_\_

**F1-2.** If the accessible entrance is not the main entrance, are there large-print signs at the main entrance to direct individuals to the nearest accessible entrance? Yes \_\_\_ No \_\_\_

**F2.** Does at least one door (or one side of a double leaf door) at the accessible entrance provide at least 32 inches clear passage width when the door is open 90 degrees (see picture to the right for explanation of measurements)? Yes \_\_\_ No \_\_\_

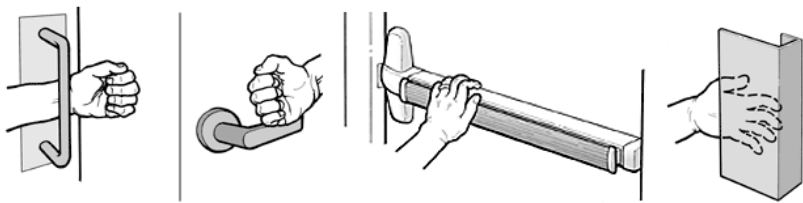


Open the door 90 degrees. Measure between the edge of the doorway on one side, and the inside edge of the door frame on the other side. This must be at least 32 inches wide.

**F2-1.** If no, does another entrance have an accessible door? Yes \_\_\_ No \_\_\_

**F3.** Can you use the door handle with a closed fist? Yes \_\_\_ No \_\_\_

- For example, is the handle a lever, pull, or panic bar, and not a thumb lever?



Comments

Examples of handles and door hardware that can be used without tight grasping, pinching, or twisting.



F4. The door is not excessively heavy.

Yes \_\_\_ No \_\_\_

F5. Is the bottom of the door handle mounted between 34 and 48 inches above the finished floor? [ADA Stds. 4.13.9]

Yes \_\_\_ No \_\_\_

F6. If the door is not automatic or power-operated:

F6-1. Is there 18 inches of level landing clearance on the pull side of the door? [ADA Stds. 4.13.6]

Yes \_\_\_ No \_\_\_

- In other words, measure from the inside of the door frame, next to the handle, along the wall and away from the handle. See pictures on the right.

F6-1a. If no, is the door propped open as a temporary solution?

Yes \_\_\_ No \_\_\_

F7. If there is a raised threshold in the doorway:

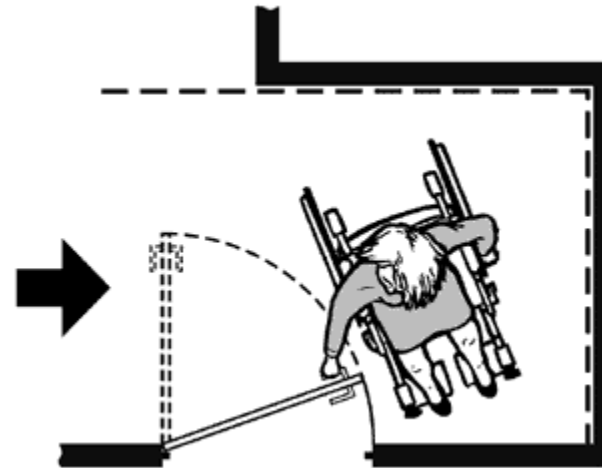
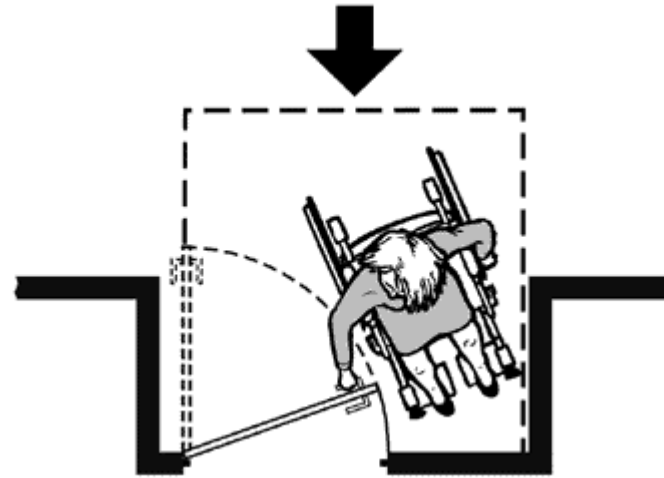
F7-1. Is it beveled on both sides?

Yes \_\_\_ No \_\_\_

F7-2. Is it 1/2 inch high max.? [ADA Stds. 4.1.6(3)(d)(iii), 4.13.8]

Yes \_\_\_ No \_\_\_

- Note: Raised thresholds of 3/4 inch high may be allowed in existing facilities built before the ADA went into effect.

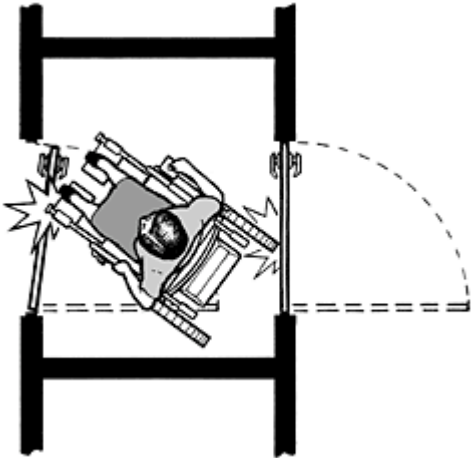


Comments

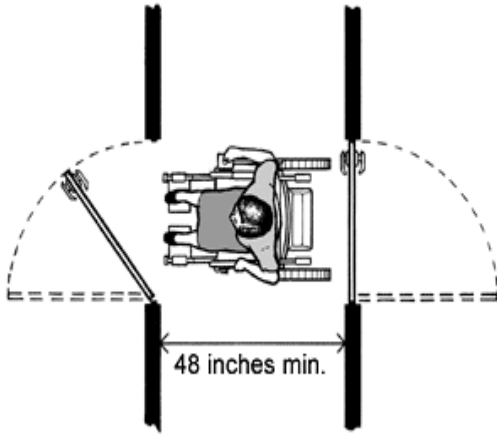
**F8.** If an entry has a vestibule, is there a 30 inch by 48 inch clear floor space inside the vestibule where a person who uses a wheelchair or scooter can be outside the swing of the hinged door (see pictures below)? [ADA Stds. 4.13.7]

Yes \_\_\_ No \_\_\_

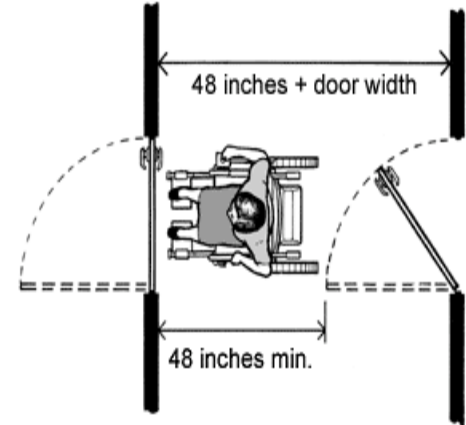
**Comments**



Insufficient space between doors makes the alcove inaccessible.



Minimum alcove depth if both doors open out is 48 inches.



Minimum alcove depth when door swings into alcove is 48 inches plus the width of the door.

**SECTION G: HALLS AND CORRIDORS (May not be applicable in many stations)**

Yes \_\_\_ No \_\_\_

**G1.** Is there an accessible route, at least 36 inches wide, that connects the accessible entrance to the station or platform area?

- Note: The accessible route may narrow to 32 inches wide for up to 2 feet in length.

**G2.** Is the accessible route free of steps and abrupt level changes over ½ inch high? [ADA Stds. 4.1.3(1), 4.3.8] Yes \_\_\_ No \_\_\_

- Note: Level changes between ¼ and ½ inch should be angled.

**G3.** At each location on the way to the Ticket Counter or station platform where the accessible route passes through a door or doors, does at least one door meet the following requirements?

**G3-1.** Is the clear width for the door opening at least 32 inches measured when the door is open to 90 degrees? [ADA Stds. 4.1.3(7), 4.13.5] Yes \_\_\_ No \_\_\_

- Note: See question F2 for information on measuring the door.

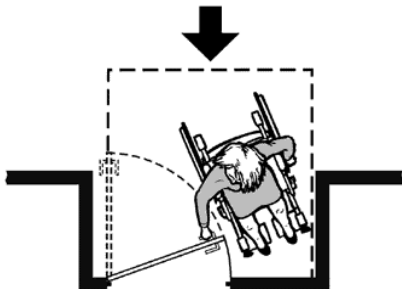
**G3-2.** Can you use the door handle with a closed fist? Yes \_\_\_ No \_\_\_

- For example, is the handle a lever, pull, or panic bar, and not a thumb lever?

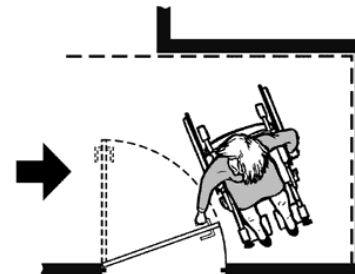


**G3-3.** Is there clear floor space on the latch side of the door, as shown in the pictures below? Yes \_\_\_ No \_\_\_

A clear floor space on the latch side of the door (pull side) allows a person using a wheelchair or scooter to pull the door open and enter. The size of the clear floor space varies depending on the direction of approach (shown by the arrows) and the door swing.



For a front approach door, there must be 48 inches min. of clear space from the door frame back.



For a side approach door, there must be 48 inches min. of clear space from the door frame back, and 54 inches min. from the hinge side of the door towards the opposite side of the door frame.

Comments

**G3-4.** Is there 18 inches of level landing clearance on the pull side of the door? [ADA Stds. 4.13.6]

Yes \_\_\_ No \_\_\_

- Note: See question F6-1 for information on measuring the clearance.

**G3-5.** Is less than 5 pounds of force needed to push or pull open the accessible door?

Yes \_\_\_ No \_\_\_

**G3-5a.** If no, is this a fire door?

Yes \_\_\_ No \_\_\_

- Note: Fire doors may be heavier than other doors.

If you have a spring scale, measure the force needed to open the door.

---

**Comments**



**Ramps**

**G5.** Are all parts of the accessible route sloped less than 1:20 or 3 degrees? Yes \_\_\_ No \_\_\_

**G5-1.** If no, do *these parts* meet the following requirements for an accessible ramp?

**G5-1a.** Is the ramp slope less than 1:12 or 5 degrees? [ADA Stds. 4.8.2] Yes \_\_\_ No \_\_\_

**G5-1b.** Is the ramp width, measured between handrails, at least 36 inches? [ADA Stds. 4.8.3] Yes \_\_\_ No \_\_\_

**G5-1c.** Are handrails mounted between 34 and 38 inches above the ramp surface? [ADA Stds. 4.8.5] Yes \_\_\_ No \_\_\_

- Note: Measure from the top of the handrail.

**G5-1d.** If the ramp is more than 30 feet long, is a level landing at least 60 inches long provided between every 30 feet of ramp? [ADA Stds. 4.8.4] Yes \_\_\_ No \_\_\_

**G5-1d-1.** If no, please measure the height and length of each ramp section.

---

**G5-1e.** Does the ramp have a level landing at the top and bottom of each ramp section that is at least 60 inches long and the width of the ramp (min. 36 inches)? [ADA Stds. 4.8.4] Yes \_\_\_ No \_\_\_

- Note: The level landing may be part of the sidewalk or walking surface.

**G5-1f.** Is a level landing, 60 inches by 60 inches min., provided where a ramp changes directions? [ADA Stds. 4.8.4] Yes \_\_\_ No \_\_\_

- Note: Where the ramp leads to a door, this is often a change of direction and a level landing is required.

**G5-1g.** If the ramp or landing has a vertical drop-off on either side of the ramp, is edge protection provided on both sides (at least 2 inches high, or, if edge protection is not attached to the surface of the ramp, with less than 4 inches between the edge protection and the ramp surface)? [ADA Stds. 4.8.7] Yes \_\_\_ No \_\_\_

**Comments**

**G6.** Are the pedestrian routes leading to or serving the station/platform area free from objects that protrude from the side more than 4 inches into the route and that have a bottom edge higher than 27 inches above the floor? [ADA Stds. 4.4.1]

Yes \_\_\_ No \_\_\_

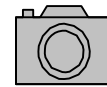
- Note: these objects may be wall-mounted or free standing. Items to look for include wall-mounted fire extinguishers, light fixtures, coat hooks, shelves, drinking fountains and display cases.
- Note: if the bottom of an object is at or less than 27 inches above the floor, it may extend an unlimited amount from the wall.

**G6-1.** If no, list the objects that are a hazard and where they are located.

---

---

---



**G7.** Are the pedestrian routes leading to or serving the station/platform area free from objects that are overhead and that have a bottom edge lower than 80 inches above the floor?

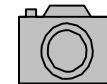
Yes \_\_\_ No \_\_\_

**G7-1.** If no, list the objects that are a hazard and where they are located.

---

---

---



**G8.** If provided, are the interior stairs along the pedestrian routes built so that people who are blind or have visual disabilities cannot hit their heads on the underside (i.e. protected with a cane-detectable warning or a barrier that prevents travel into the area with less than an 80-inch-high clearance)? [ADA Stds. 4.4.2]

Yes \_\_\_ No \_\_\_

**Comments**

**SECTION H: TICKET COUNTER (IF THERE IS ONE)**

**Comments**

**H1.** Is there an accessible entrance to the ticket counter area? Yes \_\_\_ No \_\_\_

**H2.** Within the station/platform area, is there at least one accessible ticket counter/area? Yes \_\_\_ No \_\_\_

**H3.** Is the ticket counter area free from objects that protrude from the side more than 4 inches into the route and that have a bottom edge higher than 27 inches above the floor?  
[ADA Stds. 4.4]

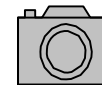
- Note: these objects may be wall-mounted or free standing. Items to look for include wall-mounted fire extinguishers, light fixtures, coat hooks, shelves and display cases.

**H3-1.** If no, list the objects that are a hazard and where they are located.

---

---

---



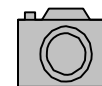
**H4.** Is the ticket counter area free from objects that are overhead and that have a bottom edge lower than 80 inches above the floor? Yes \_\_\_ No \_\_\_

**H4-1.** If no, list the objects that are a hazard and where they are located.

---

---

---



H5. Do all rugs and mats along the accessible route have low pile (short fibers)? Yes \_\_\_ No \_\_\_

H6. Is there a way for a passenger to buy ticket in a seated position that is accessible to a person using a wheelchair? Yes \_\_\_ No \_\_\_

H7. Is the ticket counter area well lit? Yes \_\_\_ No \_\_\_

Comments

### RESTROOMS

The technical accessibility requirements for restrooms are very detailed and lengthy. Thus, we are just asking for a Simple review of the restroom. Are the doors wide enough for a wheelchair user to get in and out? Yes\_\_\_ No\_\_\_

Is there a restroom stall with a wide door and space for a wheelchair? Yes\_\_\_ No\_\_\_

Does the stall have grab bars? Yes\_\_\_ No\_\_\_

Any other comments about the restroom? \_\_\_\_\_  
\_\_\_\_\_

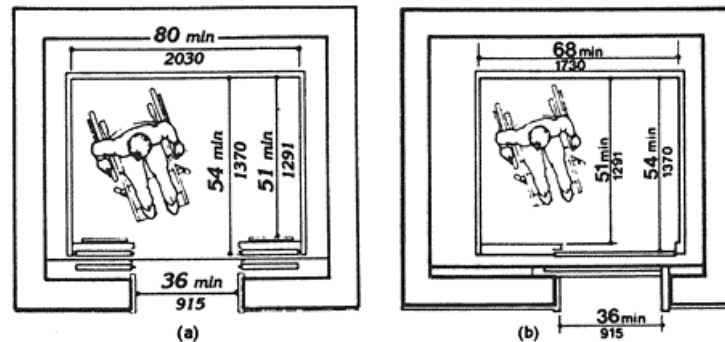
Please take pictures/videos if possible and submit with survey with information identifying the photographs.

## SECTION I: ELEVATORS (if any) AND PLATFORM WHEELCHAIR LIFTS

Comments

### Elevator

- I1.** Is an elevator provided to access the station/platform area level? Yes \_\_\_ No \_\_\_
- I2.** Are the elevator call buttons mounted in an accessible location, with the center of the buttons 42 inches above the floor? [ADA Stds. 4.10.3] Yes \_\_\_ No \_\_\_
- I2-1.** Are the elevator call buttons at least  $\frac{3}{4}$  inch in diameter? Yes \_\_\_ No \_\_\_
- I2-2.** Do the call buttons light up or provide other visual cues to indicate that the elevator has been called? Yes \_\_\_ No \_\_\_
- I3.** Are the lights showing the elevator's direction mounted with the center of the light at least 72 inches (6 feet) above the floor? [ADA Stds. 4.10.4(1)] Yes \_\_\_ No \_\_\_
- I3-1.** Do the lights showing the elevator's direction measure at least 2  $\frac{1}{2}$  inches in some direction? Yes \_\_\_ No \_\_\_
- I4.** Does the floor area of the elevator car provide space for a person using a wheelchair to enter, reach the controls, and exit the car? Yes \_\_\_ No \_\_\_
- Note: Floor dimensions of at least 48 inches by 48 inches may be allowed in existing facilities built before the ADA went into effect.



**15. Elevator buttons**

**15-1.** If the passenger would reach forward to press the elevator floor control buttons, are the highest buttons mounted less than 48 inches above the floor? Yes \_\_\_ No \_\_\_

**15-2.** If the passenger would reach sideways, are the highest floor control buttons mounted less than 54 inches above the floor? Yes \_\_\_ No \_\_\_

**15-3.** Are raised letter and Braille characters used to identify each floor button and each control? [ADA Stds. 4.10.12] Yes \_\_\_ No \_\_\_

**15-4.** Are the control buttons at least 3/4 inch in diameter? Yes \_\_\_ No \_\_\_

**16.** Are signs mounted on both sides of the elevator door opening to designate the floor, with the center of the sign at least 60 inches above the floor? [ADA Stds. 4.10.5] Yes \_\_\_ No \_\_\_

**16-1.** Do the signs have 2 inch min. height raised letters and Braille characters? Yes \_\_\_ No \_\_\_

**17.** Is the elevator equipped with audible tones or bells or verbal enunciations that announce each floor as it is passed? [ADA Stds. 4.10.13] Yes \_\_\_ No \_\_\_

**Portable Manual Wheelchair Lift on Station Platform**

**18.** Is a wheelchair lift provided to access the train? Yes \_\_\_ No \_\_\_

**19.** Does lift appear to be operational at this time? Yes \_\_\_ No \_\_\_

Explain if you see something that would make you think the lift is not operational and take photographs. \_\_\_\_\_

\_\_\_\_\_

**Comments**